



# HKTC



CONFIDENCE FOR **THE BEST**  
THOUGHTFULNESS TO **SAFETY**  
MANEUVERABILITY TOWARD **EFFECTIVENESS**



 **HKTC**

**HARMONY OF SAFETY AND CONVENIENCE  
EXCELLENT CHOICE THROUGH  
THE VALUE BEYOND EXPECTATION**

**BEST AERIAL WORK PLATFORM MADE BY THOROUGH FIELD TEST,  
REFLECTING CUSTOMER'S PRECIOUS OPINION**

**UNPRECEDENTED PREMIUM SPECIFICATION AND OUTSTANDING PERFORMANCE  
PROVIDE FULL ENERGY TO AERIAL WORKPLACE**





**Slewing Type Main Outrigger**

Slewing type main outrigger realizes simple installation of outrigger without interference, even the vehicle for main outrigger not to be installed easily.



**Hydraulic Winch (Option)**

Platform usefulness increases by hydraulic winch for heavy weight loading. Over-winding prevention function is applied in order for safety aerial work.



**Base Protect Cover**

To prevent base damage of foreign substance or shock, protect cover is applied and exposure of hydraulic hose minimized.



**Wireless Remote Controller (German Brand)**

Reliability of aerial work rises by wireless remote controller operation.



**Electrical Bucket Slewing**

Safe aerial work is secured by electrical bucket slewing operation.



**H Type Rear Outrigger**

H type rear outrigger increases safe operation of platform and same type of front & rear outrigger maintain safe vehicle horizontality.



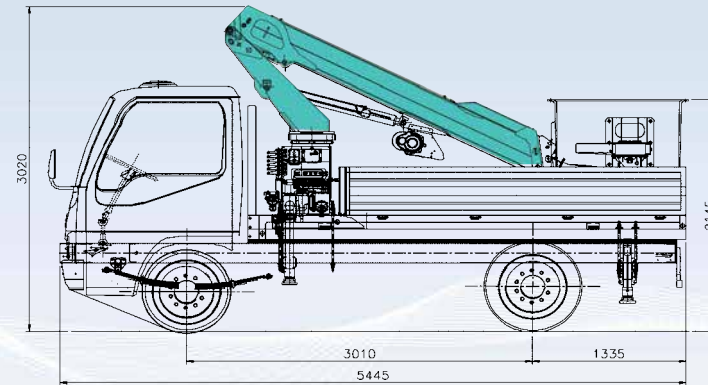
**Safe Boom System**

To minimize the shaking on aerial work, sliding pad is applied to every section of hexagonal boom and safety of wire strengthen by wire levelling fixing device.

# TECHNICAL SPECIFICATIONS

# EXTERIOR

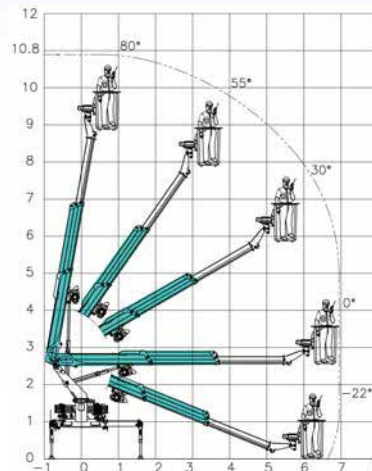
Description		HAP-1000M	HAP-1200M	HAP-1500M
Basket	Rated Load	200kg.f	200kg.f	200kg.f
	Size	F.R.P (Fiberglass Reinforced Plastic)		
	Material	630 mm x 1,105 mm x 1,000 mm		
Working Height	Max. Working Height	10.8 m	12.0 m	15.1 m
	Bucket Height (to Floor of Bucket)	8.8 m	10.0 m	13.1 m
Rated Oil Flow		15 Liter / min		20 Liter / min
Hydraulic Fluid Tank Capacity		35 Liter		
Boom	Type	Hexagonal		
Slewing	Type	Hydraulic Motor Driven Worm Gear Reduction		
	Angle / Speed	370° Uncontinuous / 1 rpm		
Winch (Optional)	Type	Hydraulic Motor Driven Spur Gear Reduction		
	Capacity	1,000 kg.f		
Safety Devices		Safety Valve (Relief Valve) / Over-center Valve / Double Pilot Check Valve / Safety Hook / Emergency Stop Device / Manual Emergency Pump / Upper & Lower Interlock / Buzzor etc.		
Available Vehicle	Payload basis	1 ton and over	1.2 ton and over	2.5 ton and over



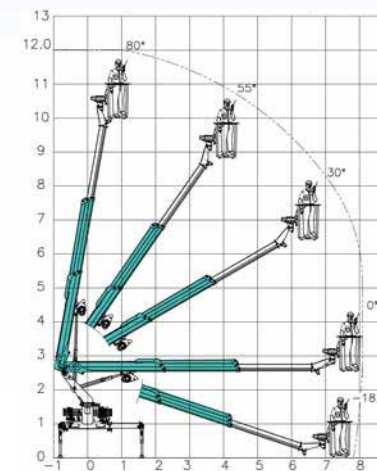
Exterior can be changed according to procured truck chassis.

# WORKING RADIUS

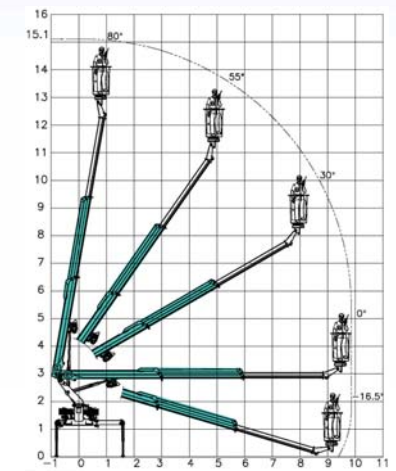
HAP-1000M



HAP-1200M



HAP-1500M



- ※ The specification can be changed for the product improvement without prior notice at any time.
- ※ The above mentioned models can be mounted on technically-suitable truck, regardless of truck maker.

## HanKook Tower Crane Co., Ltd.

Head Office : 1191, Chopyeong-ro, Chopyeong-myeon, Jincheon-gun, Chungbuk, Korea  
 Tel : +82-43-838-3311 Fax : +82-43-838-3361  
 E-mail : snha@hkct.co.kr www.hkct.co.kr

